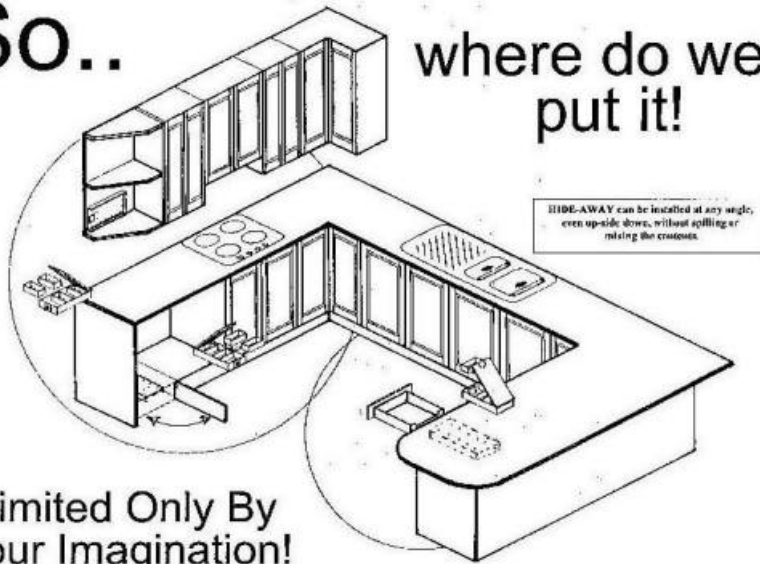


So..

where do we put it!

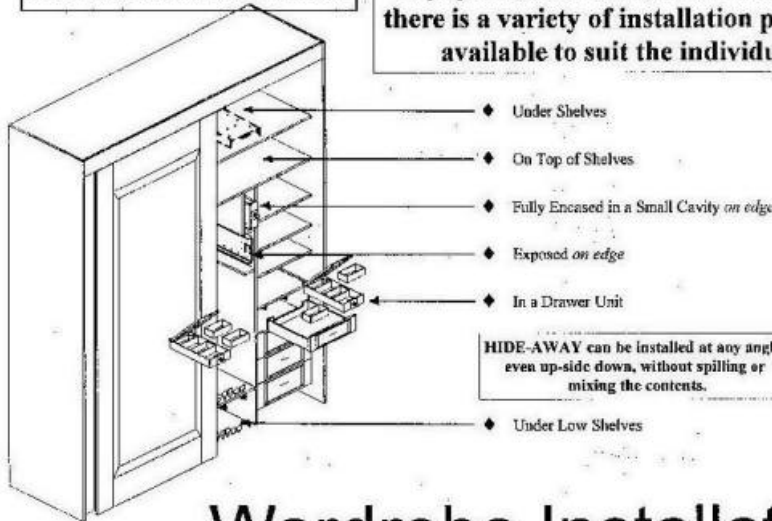


HIDE-AWAY can be installed at any angle, even up-side down, without spilling or mixing the contents.

Limited Only By Your Imagination!

Ideal Locations for Motel and Accommodation Houses.

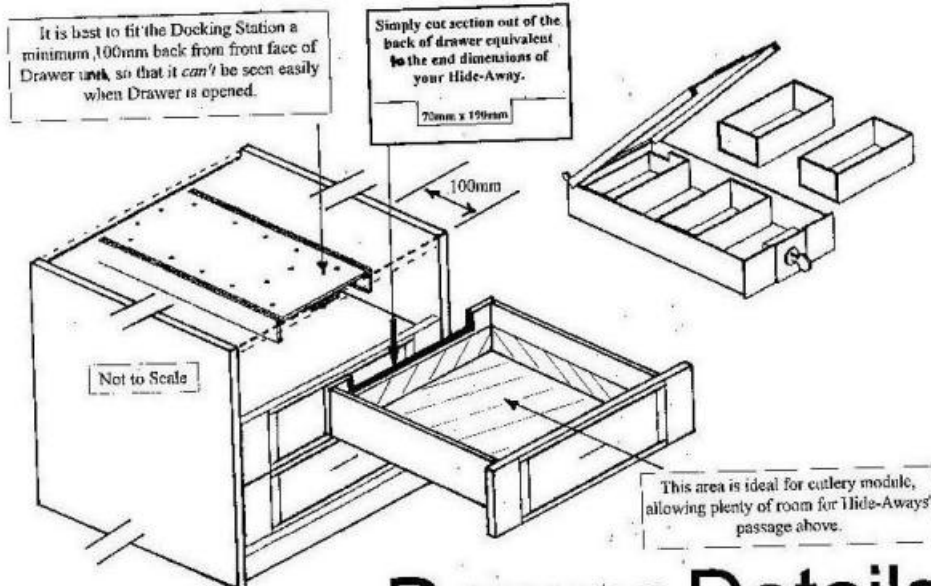
In a Wardrobe; (pantry, entertainment unit, display case, bookshelves, built in module etc) there is a variety of installation positions available to suit the individual.



- ◆ Under Shelves
- ◆ On Top of Shelves
- ◆ Fully Encased in a Small Cavity *on edge*
- ◆ Exposed *on edge*
- ◆ In a Drawer Unit
- ◆ Under Low Shelves

HIDE-AWAY can be installed at any angle, even up-side down, without spilling or mixing the contents.

Wardrobe Installation



It is best to fit the Docking Station a minimum 100mm back from front face of Drawer unit, so that it can't be seen easily when Drawer is opened.

Simply cut section out of the back of drawer equivalent to the end dimensions of your Hide-Away.
70mm x 190mm

Not to Scale

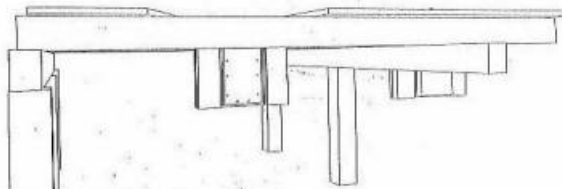
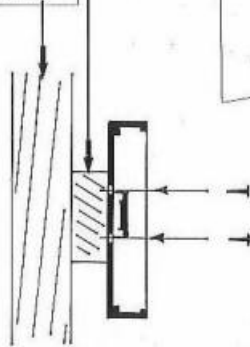
This area is ideal for cutlery module, allowing plenty of room for Hide-Aways' passage above.

Drawer Details

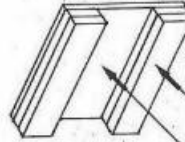
Nogging Fix:
Using 4 central
screw / bolt holes
only.

fix 90/100mm
nogging...

to: floor joist or
bearer, packed
out nogging or
similar.



Ideal Underfloor Retrofit Module

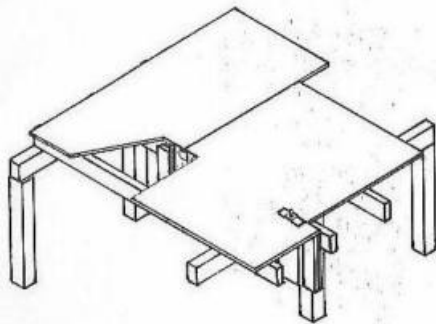


Fully Encased:
Double 90 x 35mm nogging
on edge each side.
Mounting Base 330 x 370
x 18mm Craftwood.

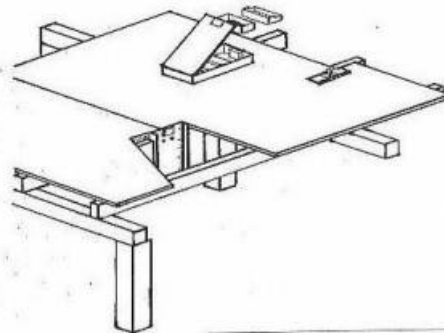
Under Floor Fixing

Under Floor Fixing NEW or EXISTING BUILDINGS

HIDE-AWAY can be installed at any angle,
even up-side down, without spilling or
mixing the contents.

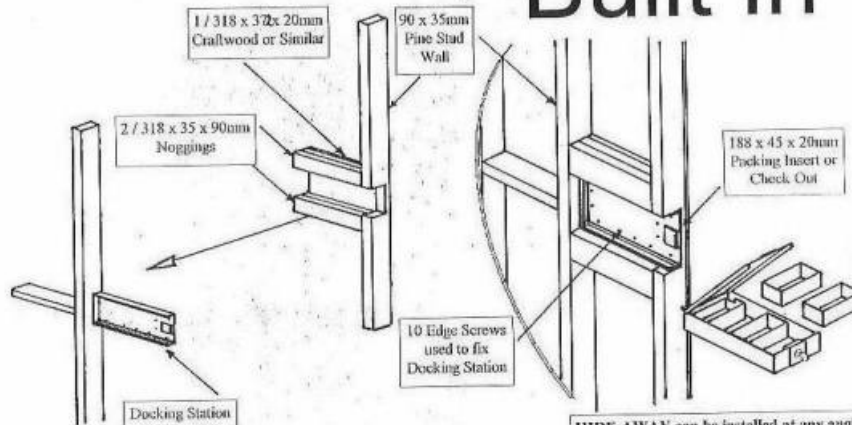


Fitted flush to panel floor to suit;
Carpet, Vinyl and Polished Boards.



Fitted proud of panel floor to suit;
Tile and Parquet floors etc.

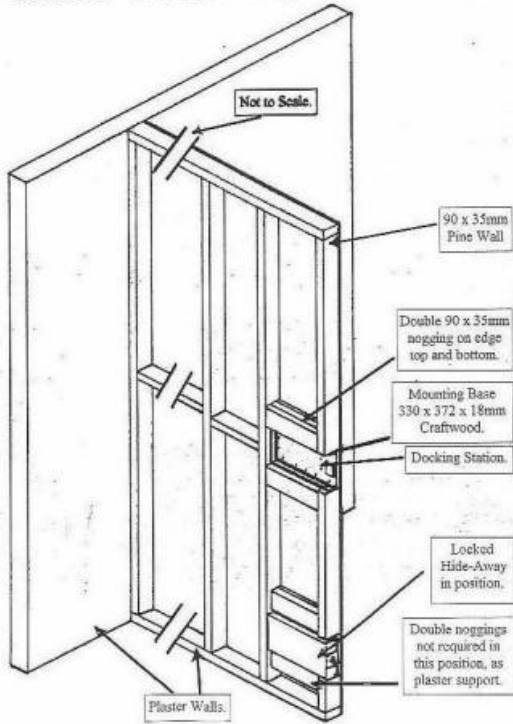
Built In



HIDE-AWAY can be installed at any angle,
even up-side down, without spilling or
mixing the contents.

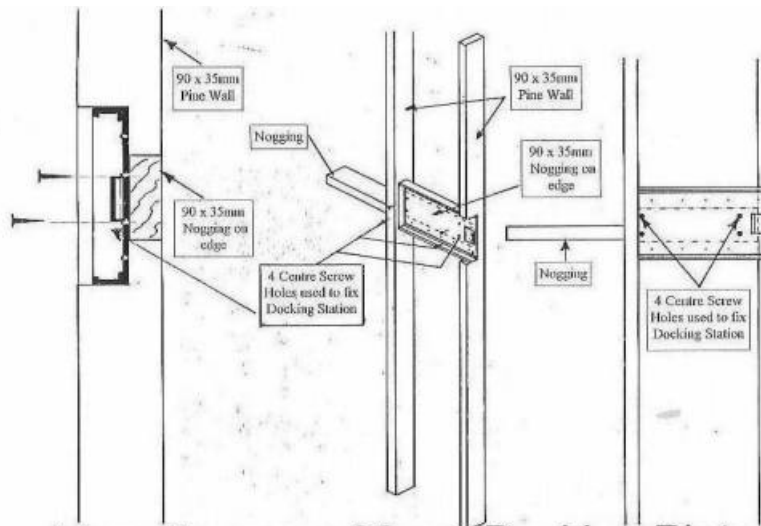
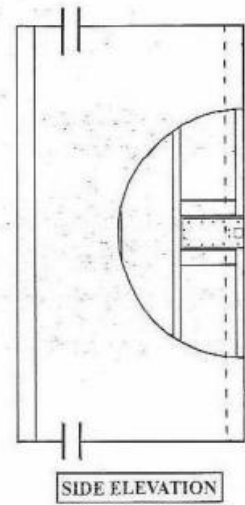
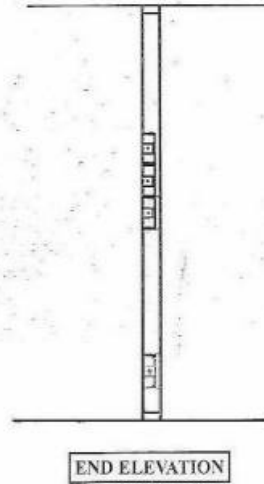
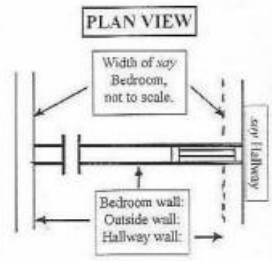
Mounting in a Nib Stud Wall

Stud Wall Installation



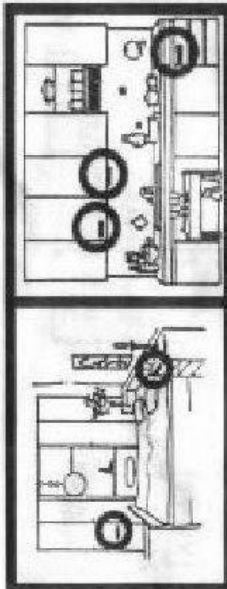
Schematic drawing of Bedroom/Hallway Wall section, showing typical Hide-Away fitment.

A clever cost effective solution to multiple security needs; Install two or more Hide-Aways directly one under the other in the wall and use one painting or wall hanging to conceal them

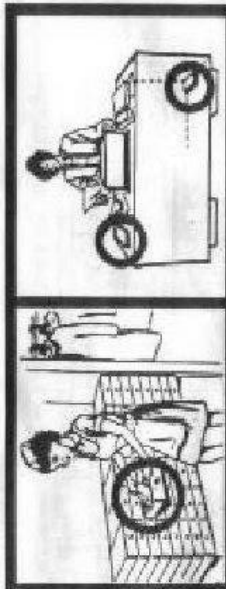


Mounting on a 90mm Backing Plate

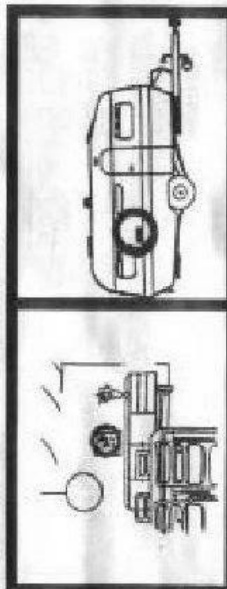
1001 Secure Locations 24 hrs / day, 7 days / week.



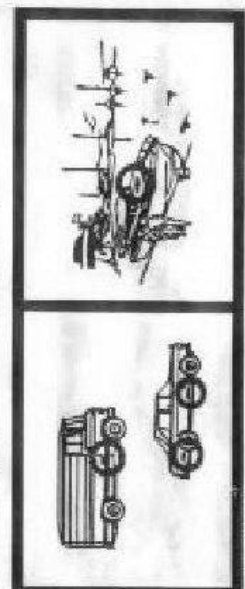
Kitchen cupboards...
Drawer units.



Business/Institutions/Clubs...
Hospital Ward—Staff room—Centralized Security Pickup Modules—Banking.



In-Built...
In Walls and/or Floors...
Coversans/Compass/RAV4...
Simply a man.



Minor Vehicles...
Under seat fitting—Taxi and Cash van Security—Rope False floor Security...
From the Car to the Road.